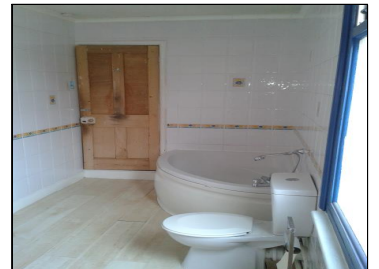


Asking Rent : £525.00 PCM

18 Nutfield Road, Leicester, LE3 1AN



Features

2/3 bed terraced house with large lounge and kitchen with a family bathroom.

A lovely recently refurbished house close to town off Narborough Rd.

9 De Montfort Street, Leicester LE1 7GE
☎Tel: 0800 03 52 651 ☎Fax: 0116 226
4029 ☎Email: office@mclproperty.co.uk
www.mclproperty.co.uk